

NS-30VRCIP



NS-30VR

Delivers multiple security functions in a discreet form factor ATM Sentry protects sensitive assets without being obtrusive

- Digital PIR sensor reliably detects presence at night within a defined target area
- Integrated IP day/night overview camera adapts intelligently to conditions
- White LED illuminates on movement and allows colour images at night
- Integrated Infra-Red supports camera image quality at night
- Flashing blue LEDs strobe when alarm input is triggered

The white light will only operate at night when someone approaches the area immediately in front of the unit to support full colour video. If the alarm input is triggered then the white light is disabled to maximise the impact of the blue strobe, an effective deterrent and incident alert.

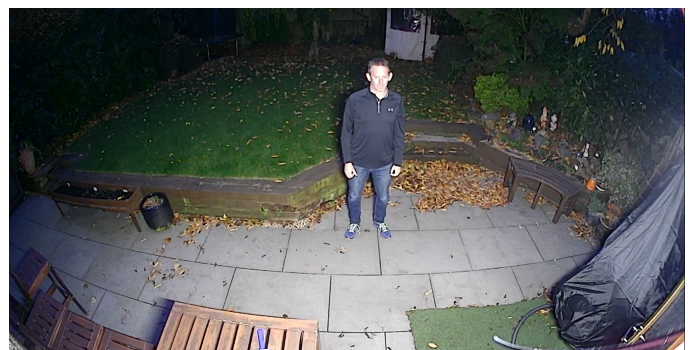
The integrated HD IP camera provides colour surveillance during the day or when the light is on, giving an ideal perspective angled down to the target at 45°. At night clear monochrome images are supported by the linear IR LEDs. Can be powered by 12vDC or a PoE 802.3af network switch.

	NS-30VRCIP - With HD IP Camera	NS-30VR - Without Camera
White Light	Up to 900 Lumens @ 4000k	Up to 900 Lumens @ 4000k
Infra Red Light	840nm	N/A
Power	12vDC 12w & PoE Adapter	12vDC 9w
Dimensions	465x30x30mm	400x30x30mm
Alarm	Momentary alarm input to trigger blue strobe	Momentary alarm input to trigger blue strobe
Detection	4-5m Digital PIR 45° H detection zone	4-5m Digital PIR 45° H detection zone
Camera	1/2.9" 5MP CMOS DSP Sensor 0.05 lux	N/A
Video	5MP H.264 & H.265 day/night ONVIF NDAA	N/A
Lens	2.9mm with IR cut filter F2.0	N/A
Field of View	100° Horizontal 85° Vertical	N/A
Weatherproof	IP-65	IP-65
Vandal Rating	IK7 with security retaining screws	IK7 with security retaining screws
Construction	Aluminium alloy & ABS	Aluminium alloy & ABS
Mounting	2.5-4m high to wall/ceiling/overhang	2.5-4m high to wall/ceiling/overhang



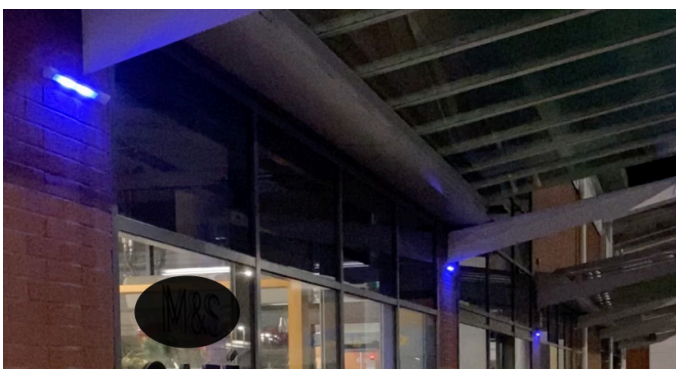
Colour Camera

During daylight hours the camera provides wide angle, overview surveillance with high resolution colour images for recording onto a CCTV system



Security Light

If a person approaches the protected area at night the white LED turns on and the camera reverts to colour mode. The illumination provides additional comfort to an ATM user at night and will turn off 60 seconds after they leave the area.



Alarm Strobe

If an alarm is triggered - such as ATM attack the flashing blue LEDs strobe to alert law enforcement and create an effective deterrence. The white light turns off to reduce vision and IR turns back on to give crisp video of the alarm event - unaffected by the strobe



Infra Red Camera

At night the integrated IR LEDs turns on and the camera switches to monochrome mode. Linear Infra Red LEDs give an even illumination over a wide area without "hot spots"