

NIGHT SABRE

Smart security light setup & installation

Thanks for choosing a Night Sabre, in this box you will find a weatherproof LED light, power adapter, mains cable, 2 mounting clips and fixing screws and a pair of cable extenders.

We strongly recommend setting the Night Sabre Smart light up on the wifi network before installing, this will simplify the installation and configuration process.

Wifi Setup

1) Download the App

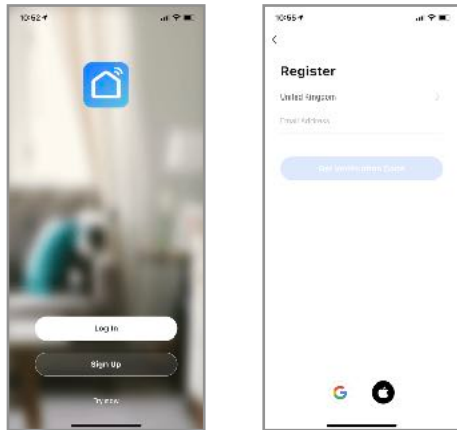
Install the Smart Life App from either the App Store or Google Play store - depending on your smart phone. Scan this QR code with your smart phone to find the App



2) Register and Login

After downloading the Smart Life App create a new account:

1. Select "Login"
2. Select your country code, enter your e-mail address or phone number and press "Obtain verification code"
3. Enter the code received by e-mail or phone, set your password and select "Completed".



3) Add Device

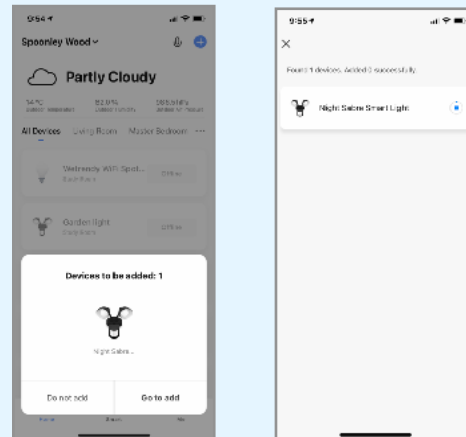
Power on the Night Sabre indoors first, you need to be within 3m of the light during setup and Bluetooth should be enabled on your phone/device, you will need to know the wifi password for your home network. After connecting the Night Sabre to the power supply and plugging the power supply in the light will flash quickly. Open the Smart Life app, the lights that are ready for pairing will be displayed, then simply follow the app based instructions to setup the device.

If this does not work try one of the following methods; Tap **Add Device** or the **plus (+)** icon in the top right corner on the Home page to go to the device adding page. Tap **Auto Scan** to enable the app to automatically detect devices. make sure to grant the app related Wi-Fi and Bluetooth permissions when prompted.

Auto Scanned devices found can be added with one tap. If you use Auto Scan mode to add devices, you need to turn on Wi-Fi and Bluetooth on your phone.

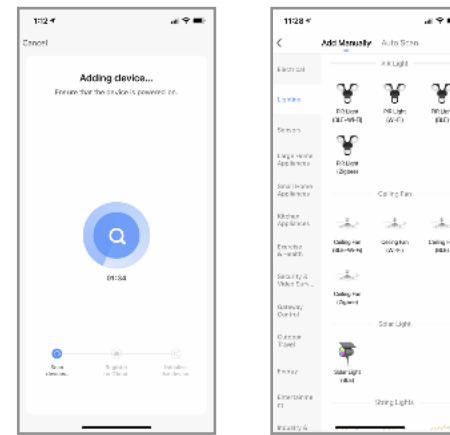
If the search times out and no devices are found, follow the instructions to troubleshoot and try again, or try to add the devices in a different mode: You can choose EZ Mode, AP Mode or Bluetooth. Make sure to enable Bluetooth on your mobile phone and try the Bluetooth option. The Night Sabre should be ready for selection, then on the Wi-Fi setting page, enter the password for connecting to the 2.4 GHz Wi-Fi network. Wait for the device to automatically complete pairing.

If these methods are not successful you can add manually by selecting the "Lighting" tab from the left side then scroll down until you see "PIR Light (BLE+Wi-Fi)" select this option to take you to the setup page. Tick the box to confirm the light is blinking rapidly. If the light is not blinking then follow the instructions on this page of the App to reset the light. Click "Next" enter the password of the WiFi network you are connected to, press "OK". When connecting the device, you can see the connection status as shown.



Select a location for the device in your smart home and press "Completed" to access the control page of the Night Sabre.

If you have been unable to add the light so far you can try Access Point (AP) Mode, the App may prompt you to try this after a number of unsuccessful attempts

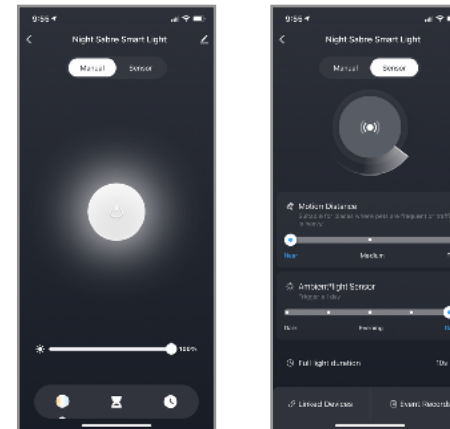


Device Control

After connecting the device, the control page will be opened automatically.

Here you can do the following:

- Turn the light on or off.
- Dim the light.



PIR Sensor Control

On the Sensor control page you can do the following:

- Turn the sensor on or off.
- Change the detection distance (Motion Distance).
- Change dusk/dawn point by moving the "Ambient Light Sensor" slider. Please note that "Day" mode will only allow the light to operate in overcast conditions - not full sunlight. Under the "Day" setting there is also more chance of the light turning on without people moving due to moving clouds, shadows etc.
- Change the dwell time that the light stays on after last motion detection.

Slight Bright

When enabled this feature will dim the LED after motion activation period has ended. You can adjust the level of micro brightness and the amount of time it remains in slight bright mode.

Device Menu

By pressing on the menu symbol at the top right you can:

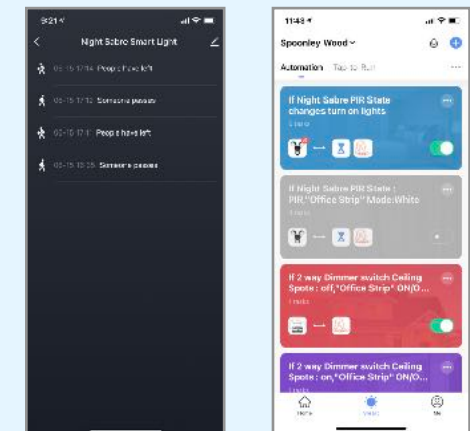
- Change the name of your device.
- Select the location of the device in your home.
- Check how to connect it to your voice control device (Google Home or Amazon Alexa).
- Share control of the device with other family members or friends.
- Create a group of multiple devices so that you can control them together.
- Update the device firmware.
- Remove the device.

Linking Smart Devices

You can link other Tuya WiFi Smart Devices with the PIR Sensor to create smart security deterrents, for example you could turn on another smart bulb inside the home after a 20 second delay to create the impression of someone at home, this function would operate only when the Night Sabre is triggered at night as per your settings.

Simply go to the "Linked Devices" at the bottom left corner of the page and then select "+" at the bottom right on the next page, you can add tasks to turn ON or OFF additional devices based on the condition of the PIR sensor.

You could change the active time time by pressing "Effective Period" at the bottom of the page.



Press the "Events Records" at the bottom right of the page to access the sensor records showing when someone triggers the PIR sensor or when they leave the area.

Creation of Scenarios and Automations

You can create an infinite number of Scenarios and Automations enabling other devices to interact with each other.

By pressing "Smart" at the bottom centre of the home page and then "+" in the upper right corner, you can choose whether to add a new scenario or a new automation.

- A Scenario is a set of commands assigned to the various devices that will be activated simultaneously whenever you click on the created scenario or in the days and hours scheduled. Sometimes called "scenes".
- An Automation is the execution of a specific command given to a device when a specific condition has been activated.

Adding to Amazon Alexa

First link the Smart Life app to Amazon App by selecting the "more" option at the bottom of the Alexa App, then selecting "Skills & Games", click on the search icon in the top right and type "Smart Life" into the field. You will be redirected to the account link page. Type in your Tuya Smart account and password, don't forget to select the country/region where your account belongs to. Then tap "Link Now" to link your Tuya Smart account. The country/region, the account, and the password must match with the exact content Link with Verification Code, open Tuya Smart App, click "Me-More, Services-Alexa"

To add the light to Alexa say "Alexa, discover devices" or go to "Add Devices" by selecting the "+" symbol on the device page.

Now you can now use the following commands to control your device;

- Alexa, turn on/off Night Sabre.
 - Alexa, set Night Sabre to 50 percent.
- If you prefer you could rename the device to "Security Light" or "Garden Light" in the Smart Life App and use that description in Alexa. More detailed Instructions can be found by scanning this QR code.



Adding to Google Assistant

You should see the Connect Smart Life option at the top of the home screen, click on this and you will be redirected to the account link page. Type in your Tuya Smart account and password. The app will list all connected devices, select the Night Sabre and Add it to a room Now you can use the following commands to control your device;

- Hey Google, turn on/off Night Sabre.

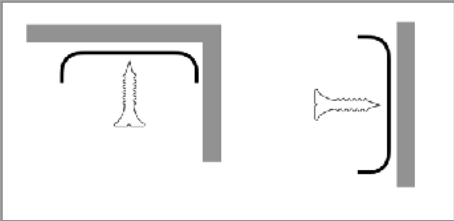
- Hey Google, set Night Sabre to 50 percent.
- Hey Google, turn Night Sabre Sensor off

If you prefer you could rename the device to "Security Light" or "Garden Light" in the Smart Life App and use that description in Google Assistant. More detailed Instructions can be found by scanning this QR code



Installation

This light can be fixed underneath an overhang such as a windowsill, above a garage door or fixed directly to a wall. The clips can be fixed vertically or horizontally as shown;



Screw the 2 mounting clips about 25cm apart to the wall (or overhang) with the supplied screws. The distance between the clips isn't critical as they can fit on anywhere along the length of the aluminium part of the light. To mount the light simply fit one edge into the top or bottom of the clips then twist it round until it clicks into place.

If you want to hide the cable you might need to drill a 10mm hole through the wall or ceiling near one end of the light. Pass the power cable through the hole and then connect to the power adapter inside. The power adapter has a fused mains lead which needs to be connected to an indoor wall socket.

Extending the Cable

If the power outlet is too far away from where you want to install the light you can either buy a 2m extension cable from your supplier (product code DS-2MC) or use the supplied cable extenders. To use the cable extenders plug them into the light and adapter cables and then join them together with a suitable 2 core cable, taking care to maintain the correct polarity. The recommended maximum distance is 20m but is dependant on the gauge of wire in the cable you use. DO NOT use the cable extenders to extend the supplied mains cable.

Operation

The Night Sabre security light has a flashing blue LED to let you know it's powered on and ready. The floodlight will only come on when it is dark enough and the PIR sensor detects motion, the light will stay on as long as there is movement then for the set dwell time after movement has stopped. The motion sensor covers an area very similar to the illuminated area – about 90° vertically and 120° horizontally, so as long as the light has been installed correctly the sensor will be aimed in the right direction.



Trouble shooting

When you first power on the light it will illuminate for 20 seconds or so then turn off, the blue warning LED will begin to flash.

No flashing blue LED:

1. Check the power adapter lead is connected to the light securely
2. Check the power adapter LED is on - if not is the mains lead plugged into the adapter correctly and the wall outlet switched on?
3. Make sure the cable has not been damaged during the installation

Flood light not turning on:

1. Check that the blue LED is flashing – so we know the light is powered and ready
2. Is it dark enough? depending on the Ambient Light Sensor setting of the App there may be too much ambient light - try adjusting the level towards "Day"
3. Is the motion sensor able to see the movement – is there anything blocking the sensor that might prevent it from detecting human movement? Try waving your hand directly in front of the light when it's dark
4. Has the sensor been deactivated through the App? When active you will see a spinning circle around the icon. By selecting "sensor" from the App device screen and tapping on the sensor icon you can activate or deactivate the motion sensor.
5. Try increasing the Motion Distance setting to increase the detector sensitivity through the App
6. Are there any CCTV cameras close that are pointing at the light? Some cameras have built in Infra-red lights that will reduce the performance of the motion sensor.

Light stays on or is on most of the time at night;

1. Is the dwell time set too long? Is there something that is constantly moving in front of the sensor?
2. Has the light been turned on manually from the App device screen? Select "Manual" and tap the "power" icon to toggle the light on or off (this also disables the sensor).
3. Are there other heat sources moving within 9m of the light? A hot air vent, road traffic or some other moving object that could be triggering the sensor?

No Wifi Control

1. Is the light installed a long way from the wifi router? You may need a wifi extender or access point closer to the light. Maximum range is typically around 15m from light to router depending on wall construction etc.
2. Is there a lot of interference from other wifi devices nearby? Try changing the default 2.4GHz channel on the router to a different one.
3. Was the light correctly added to the Smart Home App? Try going through "Add Device" process again.
4. Is the Phone connected to the same wifi network?
5. To reset the light turn the power on and off 3 times quickly. You will now need to add to the app and network again.

As Apps are regularly updated variations may occur from these instructions, when in doubt follow the guidelines and instructions offered by the App.

Maintenance

The Night Sabre light uses very efficient LEDs that are designed to last for more than 35,000 hours – that's almost 20 years of an average of 4 hours every night. So there are no bulbs to replace. Like any light you will get the best performance if it's clean, the motion sensor lens should also be kept clean and free of cobwebs or dust - so use a damp cloth to wipe the front of the light down every so often. More advice? Try the FAQ section on our website www.smartsabre.com or email us at info@devicesmart.com

| | |
|--------------|---------------|
| Power | 12vDC 1.0A |
| Output | 1400Lm A++ |
| Op Temp | -20° to +50°C |
| Warranty | 2 Years |
| Weatherproof | IP-65 |
| Dimensions | 30x30x480mm |

Designed in the UK by Device Smart Ltd.
Manufactured in China

